

We build it right. Every time. On time.

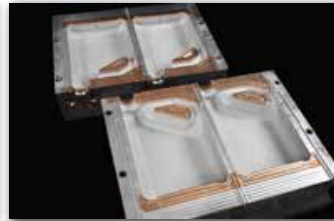


From Idea to 3D Design
Development...

To Lean Mold
Manufacturing...

To High-Quality
Precision Molds...

To Superior Consumer
Packaging



Why Partner With Creative?

- Blow Mold Manufacturing Experience since 1984
- Design Efficiencies Reduce Your Time to Market
- Design Tools & Technology Help Extend Mold Life
- Quality Assurance Processes Result in Faster Time to Production
- VALUE: Collaboration with Customers as Strategic Partners; Maximizing ROI

Contact Information:

Jim Hensiek, Director of Business Development

Mobile: 816.799.2534

jhensiek@creativeblowmold.com

2350 Independence Avenue

Lee's Summit, MO 64064

Office: 816.525.4220 x 110

www.creativeblowmold.com

Company

Since our company's start in 1984 Creative Blow Mold Tooling has been focused on designing, manufacturing, and maintaining the highest quality blow mold tooling for our customers. During our 34 years in this industry we have developed expertise with all types of applications, end markets, and blow



mold machines spanning the blow mold industry. This expertise, combined with our depth of resources, enables us to work with our customers from initial product design and prototyping through sample and production tooling, to the production of high quality blow molded containers and parts from initial start-up. We also offer scheduled mold maintenance as well as quick turn-around repair projects essential to all plant operations.

Experience

Creative employs engineers, programmers, machinists and toolmakers who have spent the majority of their careers in the blow mold industry, including several who spent time in the processing side before joining our team to build quality tooling for the industry. The collective knowledge and expertise of our team members relative to customers' equipment, materials, and end markets uniquely positions Creative to add maximum value to every mold we build.

Manufacturing Core Competencies

Creative Blow Mold Tooling offers capabilities and experience in the following areas:

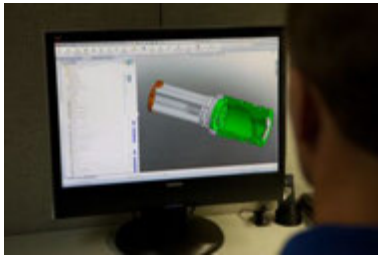
Processes	Materials		End Markets	
Wheel	HDPE	PET	Food & beverage	Motor oil
Shuttle	Polypropylene	PVC	Household chemicals	Industrial chemicals
Injection stretch blow	Polycarbonate		Personal care	Ag chemicals
Reciprocating screw			Industrial parts	Medical

Platforms	Manufacturers and Types				
Wheel	Graham TGS	Wilmington Other Proprietary Manufacturers	VR	MRM	Midwest
Shuttle	Bekum Comec Rocheleau	Fischer Magic Hesta	SIG BW CMP	Hayssen Baker Travomatic	Techne Mark Others
PET – 2 Stage	Sidel	Mag	SIPA		
Reciprocating screw	Uniloy Improved	Kautex Sterling	Liberty Prodex	Impco	Stokes
Accumulator Head	Large Containers	Industrial Molds	Toy Molds		

We build it right. Every time. On time.

Equipment and Technology

Ongoing investments in new manufacturing equipment and related technology are essential to maintaining our position in the market as a premier tooling supplier. Our design engineering and programming teams utilize the latest 3D CAD and CAM software technology and tools helping us maintain short lead times. This is particularly important in satisfying customers' demands for quick turnaround times on unit molds, lead molds, new components, and repair work.

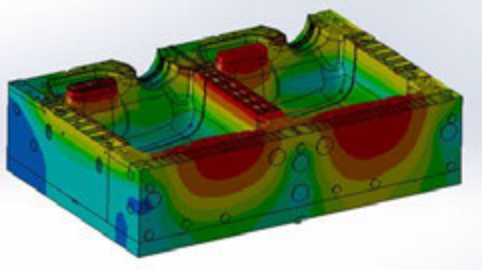


Creative invests heavily in high speed CNC machining centers that provide us with the capacity required to meet customer lead time demands. Our large manufacturing plant accommodates the significant mix of equipment required to be a full-service mold manufacturer. We also operate multiple shifts allowing us to ramp up our production capacity as our customers' demand increases.



Driving Design Innovation

In the blow mold design process, Creative Blow Mold Tooling design engineers use Computational Fluid Dynamics (CFD) analysis to enable quick, efficient simulation of fluid flow and heat transfer. Our design engineers can easily calculate fluid forces and understand the impact of a liquid on product performance. In the simulation, Creative engineers are able to identify in-advance, potential performance concerns. This process allows Creative to design our customers tooling right the first time.



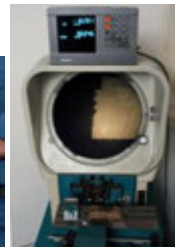
A summary of our equipment and technology

<p>Machines & Equipment</p> <ul style="list-style-type: none"> • 17 Vertical, 4 Horizontal & 2 – 5-Axis CNC Machining Centers with up to 64" X and 32" Y travel. • CNC & Manual Lathes • Manual Milling Machines • Grinders • Sandblast Stations • Water Check Stations • CMM (Computer Measurement Machining) • Comparator 	<p>Software</p> <ul style="list-style-type: none"> • SolidWorks • Pro/ENGINEER (Creo) • AutoCad • Mastercam <p>Welding:</p> <ul style="list-style-type: none"> • TIG Welding • Laser Welding • Micro Welding
------------------------------------------------------------------------------------------------------------------------------------------------------------------------------------------------------------------------------------------------------------------------------------------------------------------------------------------------------------------------------------------------------------------------------	-------------------------------------------------------------------------------------------------------------------------------------------------------------------------------------------------------------------------------------------------------------------------------------------------------

Quality Assurance:

We understand that quality is critical to the success of every mold, component or tool we manufacture. Our customers expect perfection; without it they cannot produce the parts they need to satisfy their customers' requirements. At Creative we do all we can to ensure that the finished products we produce have been designed, manufactured, and finished to exceed our customers' expectations.

- Our processes-we have standards for every operation we perform. We employ continuous improvement strategies to find ways to do things better and with even higher quality.
- Collaboration-we work with customers to completely understand their requirements and we use their feedback to quickly adjust our standard procedures and further improve our quality.
- Our people-all employees are trained on our quality standards. We perform and document first article inspection on all operations. We demand quality work from our team.
- Our equipment-our dedicated inspection room includes state-of-the-art equipment-an optical comparator, Coordinate Measuring Machine, and other inspection tools and capabilities.



24HR Emergency Blow Mold Repair:

Creative is an extension of our customer's team delivering quality blow mold tooling on time that works right out-of-the-box. We also work hard to make sure that our customers can maintain their production schedules by providing rapid turnaround time on all repairs for our customers.

We offer the following repair services to all of our customers:



- 24 HR Emergency Repair Turn-Around
- Fast turn-around time on all repairs
 - Creative stocks components parts for our customers to eliminate wait time
 - Direct drive pick-up and delivery service available

We build it right. Every time. On time.